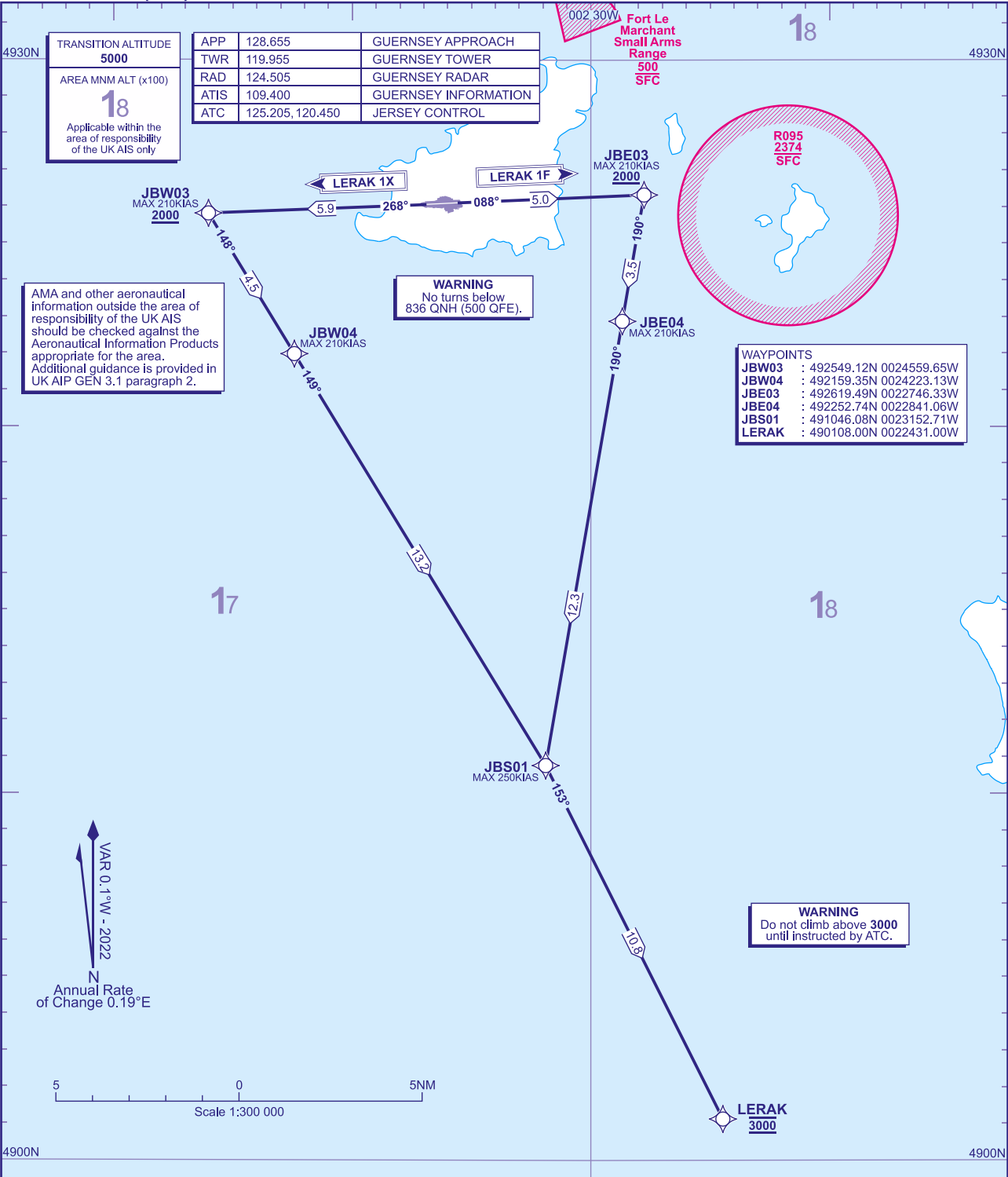


RNAV1 (DME/DME or GNSS)
STANDARD DEPARTURE CHART -
INSTRUMENT (SID) - ICAO

DISTANCES IN NAUTICAL MILES
TRACKS ARE MAGNETIC
ALTITUDES AND ELEVATIONS ARE IN FEET

GUERNSEY
RWY 09/27
LERAK 1F 1X



LERAK 1F RWY 09	Climb straight ahead to JBE03 , right to JBE04 - JBS01 , then left to LERAK .	G27, A25, T498
LERAK 1X RWY 27	Climb straight ahead to JBW03 , left to JBW04 - JBS01 , then right to LERAK .	G27, A25, T498.

NOTE 1. Close-in obstacles exist for departures from both runways. See Aerodrome Obstacle Chart and EGJB AD 2.10 Aerodrome Obstacles.
NOTE 2. Adhere to maximum speed limits where specified by waypoint constraints.

ADDITIONAL RNAV DATA
1. DME/DME only procedure: no critical nav aids.
2. RNAV1 SIDs are available only for approved aircraft that are either GNSS equipped or that have DME/DME and INS/IRU with automatic runway updating capability.

GENERAL INFORMATION
1. RNAV1 SIDs reflect Noise Preferential Routeings. See EGJB AD 2.21 for Noise Abatement Procedures.
2. En-route cruising levels will be allocated after take-off by 'Jersey Control'.
3. Report callsign, SID Designator, current level and cleared level on first contact with 'Jersey Control'.